

PART OF N.E. 1/4 OF SEC. 22, T.5N., R.1W., S.L.B.&M

YORKSHIRE MEADOWS SUBDIVISION NO. 10

184

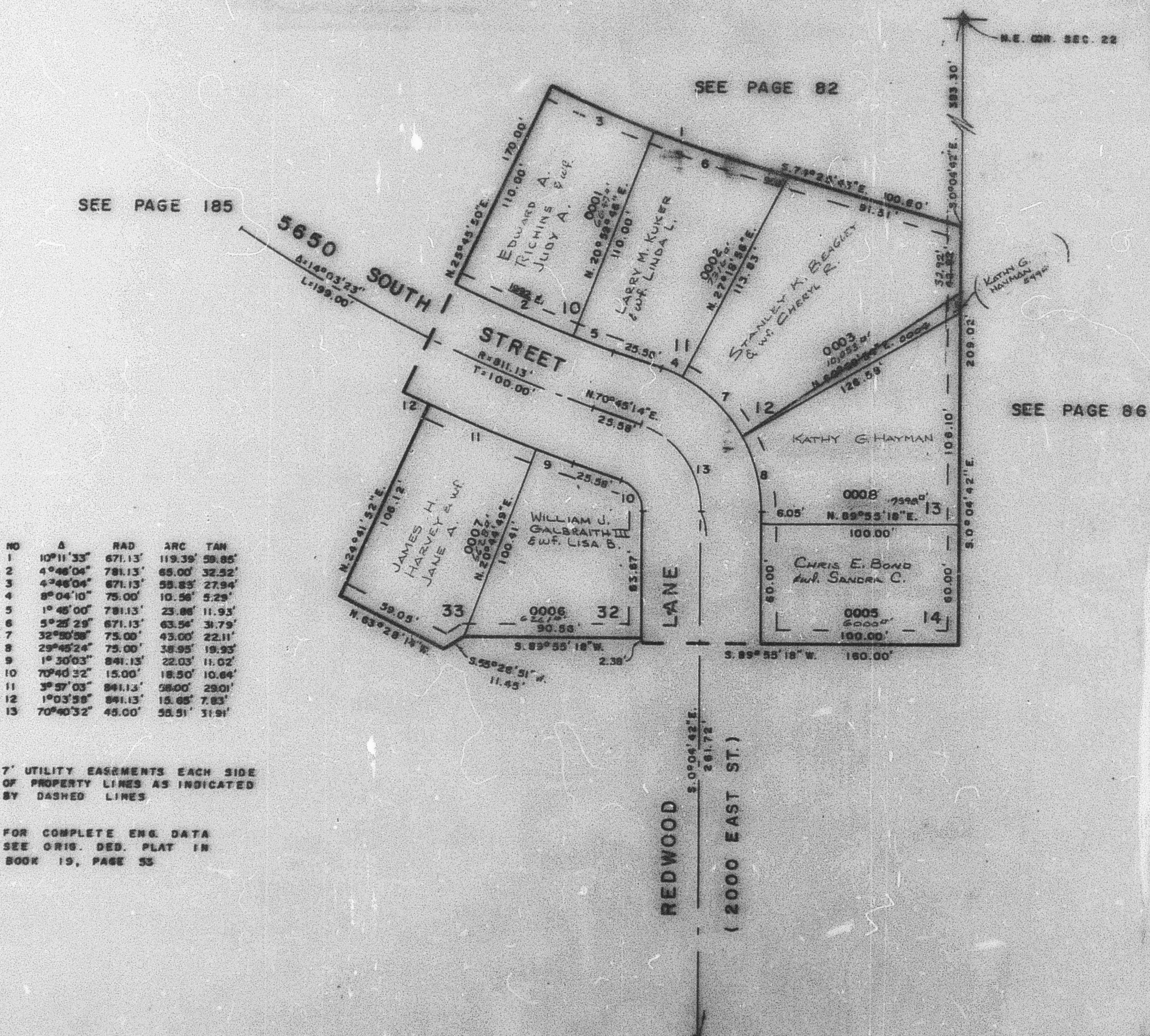
LOTS 10-14, 32 & 33

TAXING UNIT 27

IN SOUTH OGDEN CITY

PREFIX 07-184

SCALE 1" = 40'



NO	Δ	RAD	ARC	TAN
1	10°11'33"	671.13'	119.39'	59.85'
2	4°46'04"	781.13'	85.00'	32.52'
3	4°46'04"	671.13'	58.83'	27.94'
4	8°04'10"	75.00'	10.56'	5.29'
5	1°46'00"	781.13'	23.86'	11.93'
6	5°25'29"	671.13'	63.54'	31.79'
7	32°50'58"	75.00'	43.00'	22.11'
8	29°45'24"	75.00'	38.95'	19.93'
9	1°30'03"	841.13'	22.03'	11.02'
10	70°40'32"	15.00'	18.50'	10.64'
11	3°57'03"	841.13'	58.00'	29.01'
12	1°03'58"	841.13'	15.65'	7.83'
13	70°40'32"	45.00'	55.91'	31.91'

7' UTILITY EASEMENTS EACH SIDE OF PROPERTY LINES AS INDICATED BY DASHED LINES

FOR COMPLETE ENG. DATA SEE ORIG. DEED. PLAT IN BOOK 19, PAGE 33